

List Input

The list input component lets the user select from a list of items that you specify.

To use this component, first you insert it by selecting **Insert > Form > List**. Then, you configure style and behavior using [properties](#).

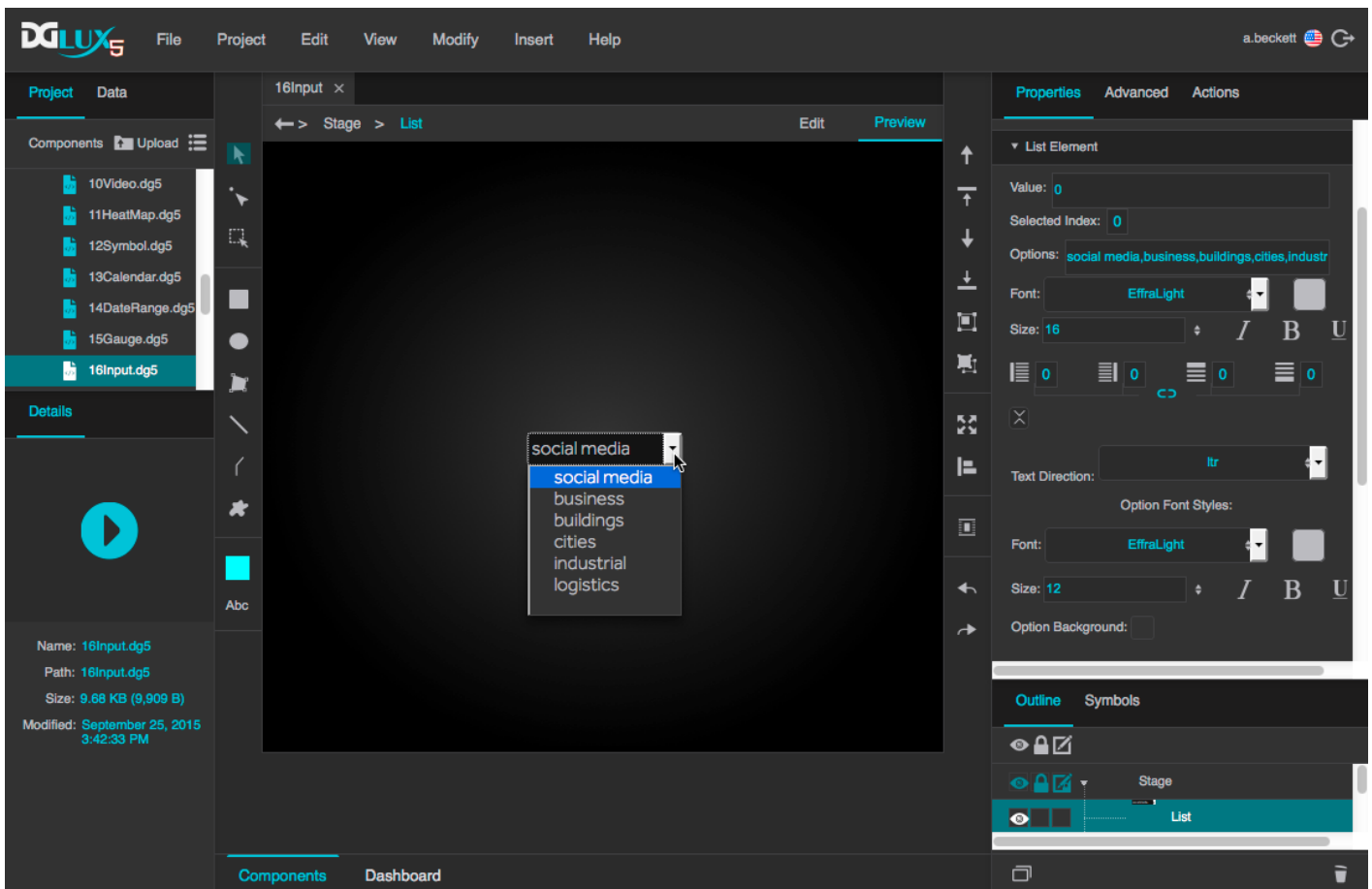
For more information about using input components, see [Designing Input Components](#).

For a detailed reference of properties that affect input components, see [Common Properties](#) and [Input Component Properties](#).



Note

The **Options** property is URL-encoded, so if you need to specify punctuation as part of this property, use its [percent-encoded](#) equivalent. For example, specify a comma as "%2C".



A list input component in DGLux5

[Previous: File Input](#)

[Next: Repeaters](#)

From:

<https://wiki.dglogik.com/> - **DGLogik**

Permanent link:

https://wiki.dglogik.com/dglux5_wiki:widgets_and_property_inspector:form_input:list:home

Last update: **2021/09/20 15:03**

