

Dock and Undock Panels

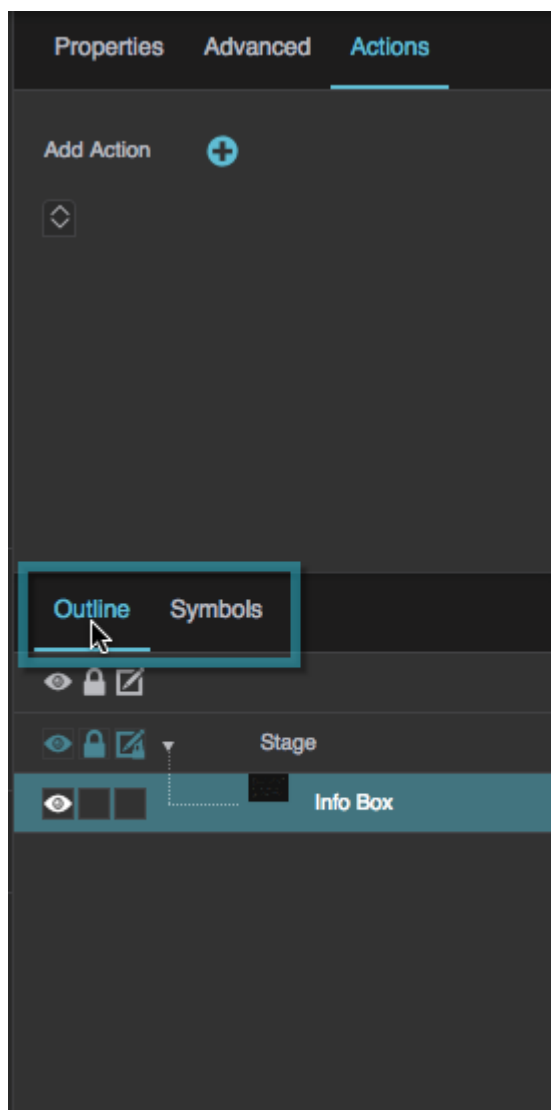
You can customize your workspace by docking and undocking panels. A dock is a tile in your workspace that contains a panel or a collection of tabbed panels. Undocked panels are not in docks, and you can move them freely around the workspace.

Some panels, like the [Dataflow window](#), only appear as undocked panels.

Dock a Panel in an Existing Dock

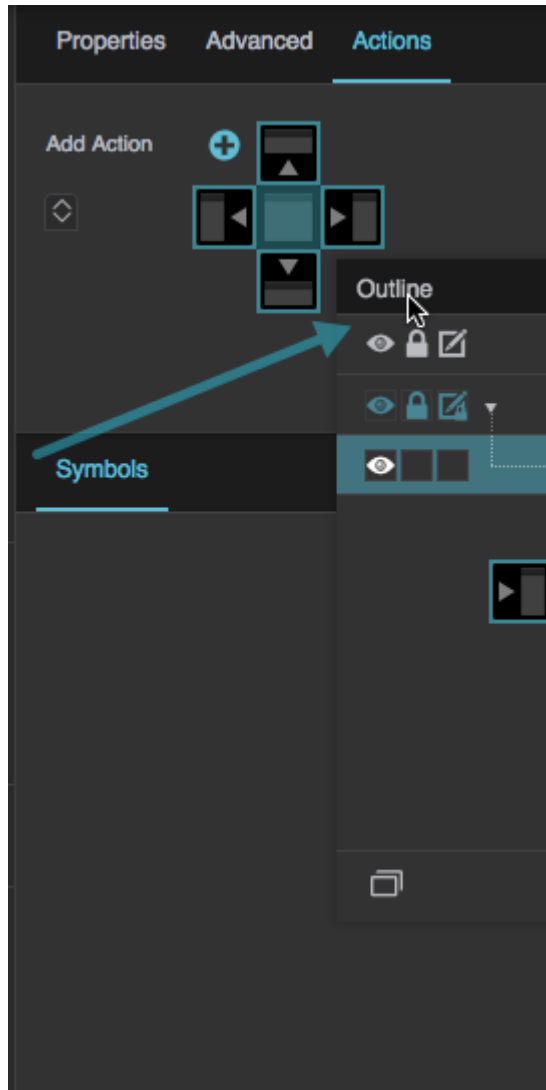
To dock a panel in an existing dock:

1. Click and hold the panel's tab.

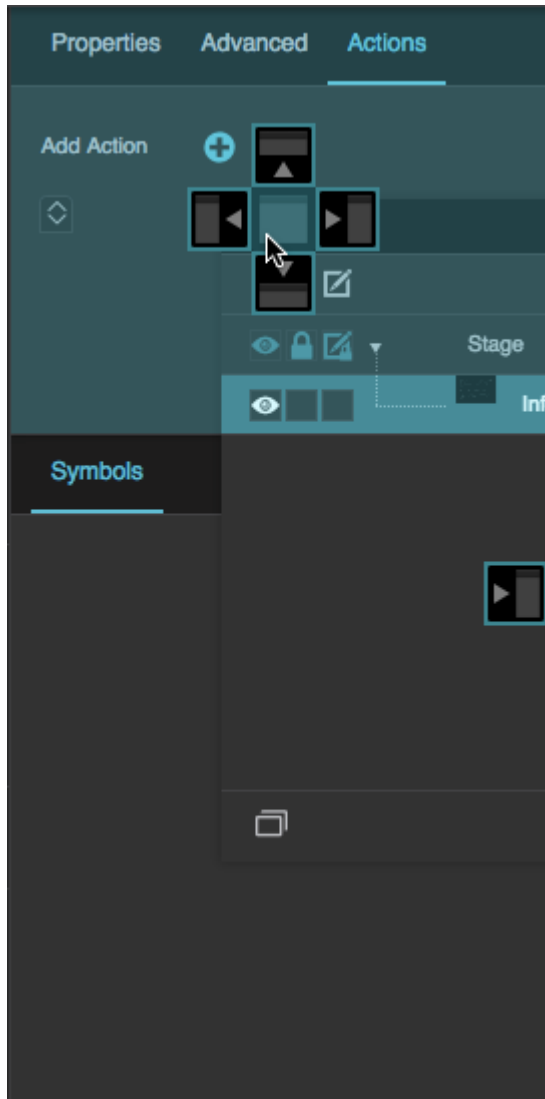


2. Drag the panel into the group.

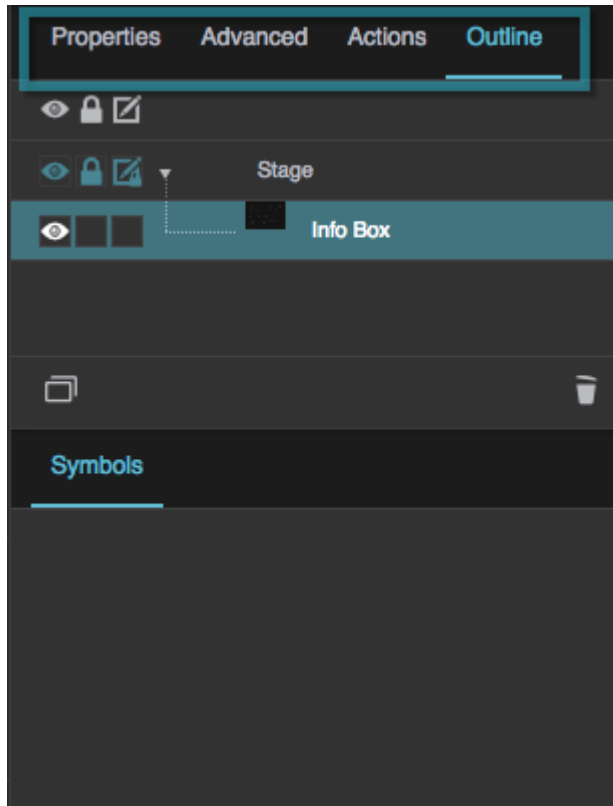
A drop zone selector shaped like a plus sign appears.



3. Move the mouse so that the cursor is on the center of the drop zone selector and the center square turns blue.
4. Release the mouse button to place the panel in this location.



Before dropping

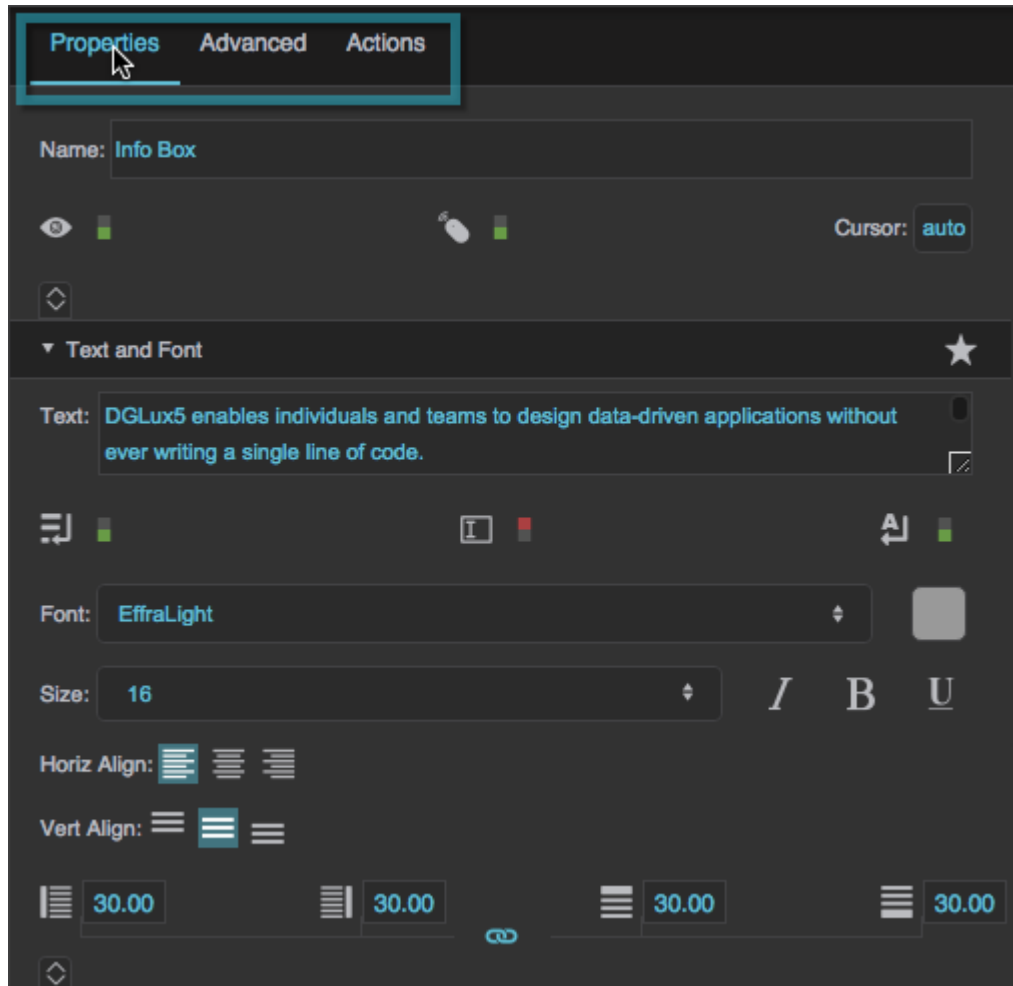


After dropping

Dock a Panel in a New Dock

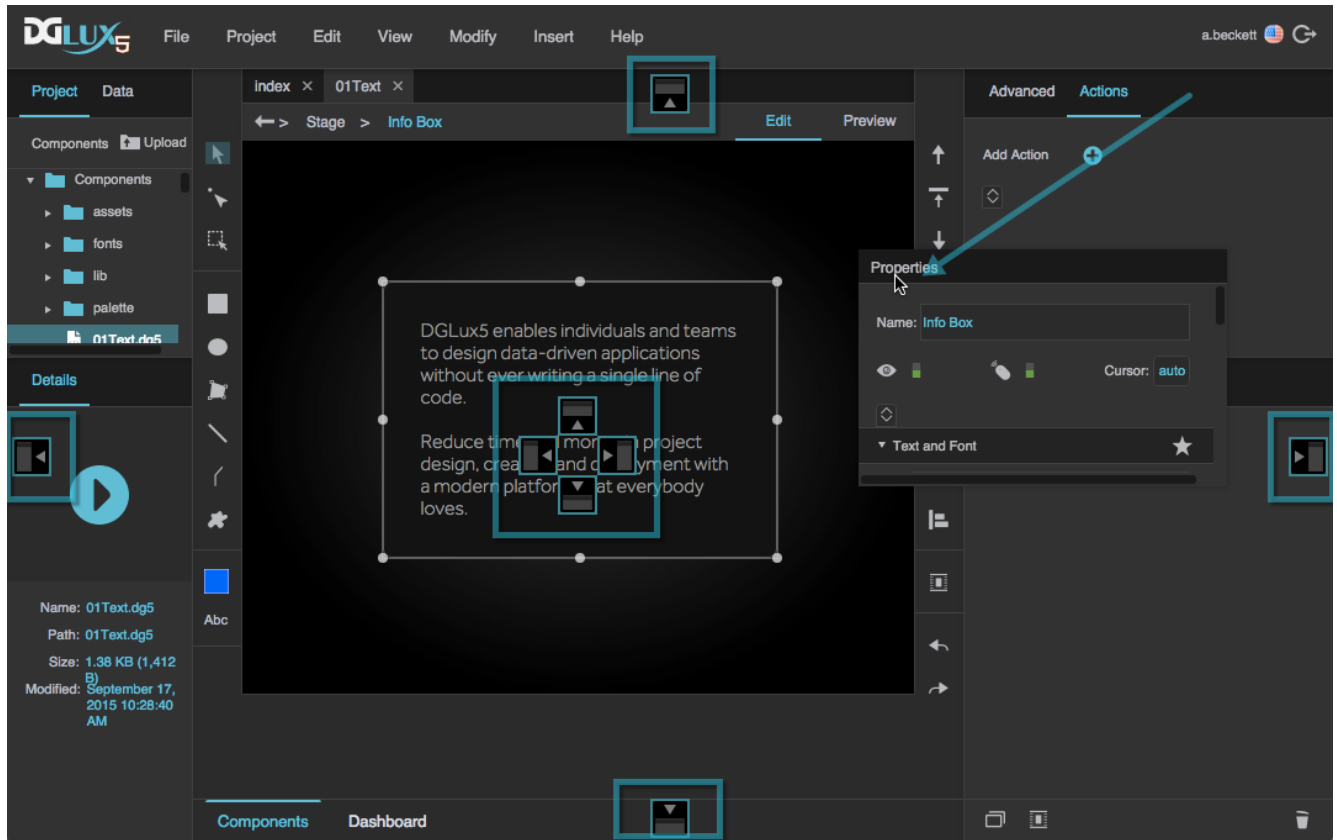
To dock a panel in a new dock:

1. Click and hold the panel's tab.

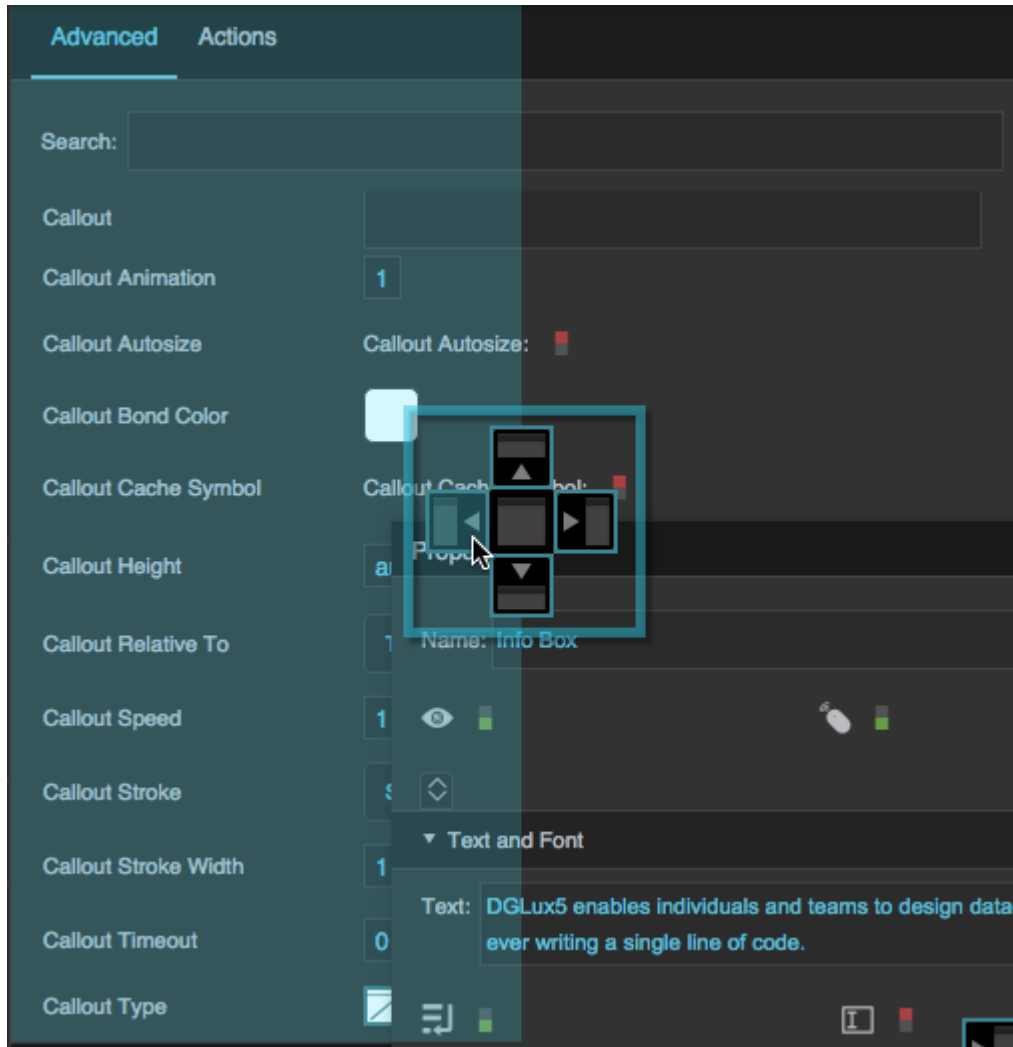


2. Drag the panel out of its dock.

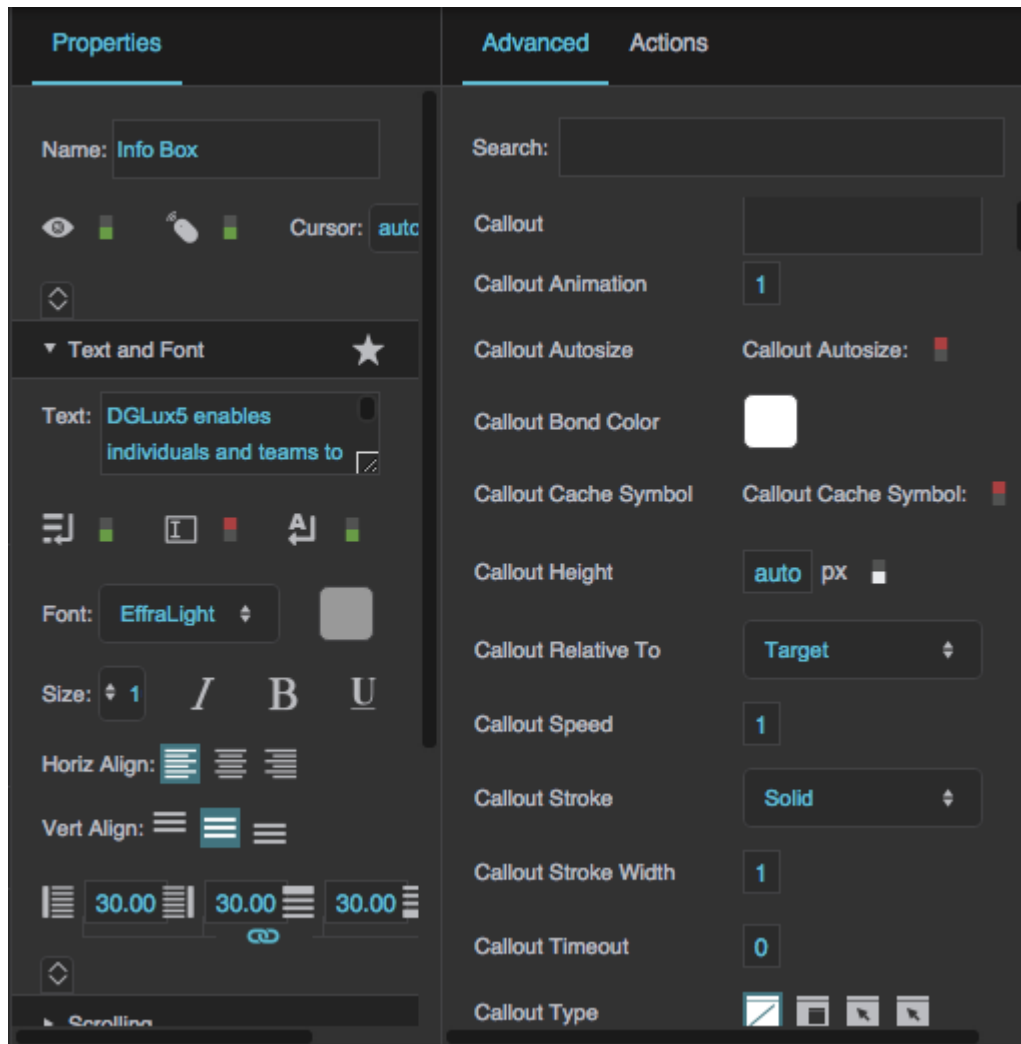
Drop zone arrows ( ,  ,  , ) appear where new docks can be created.



3. If you need to, move the mouse over different panels to see more drop zone arrows.
4. Move the mouse so that the cursor is over the arrow that you want and that arrow turns blue.
5. Release the mouse button to create a new dock at this location and place this panel within the new dock.



Before dropping

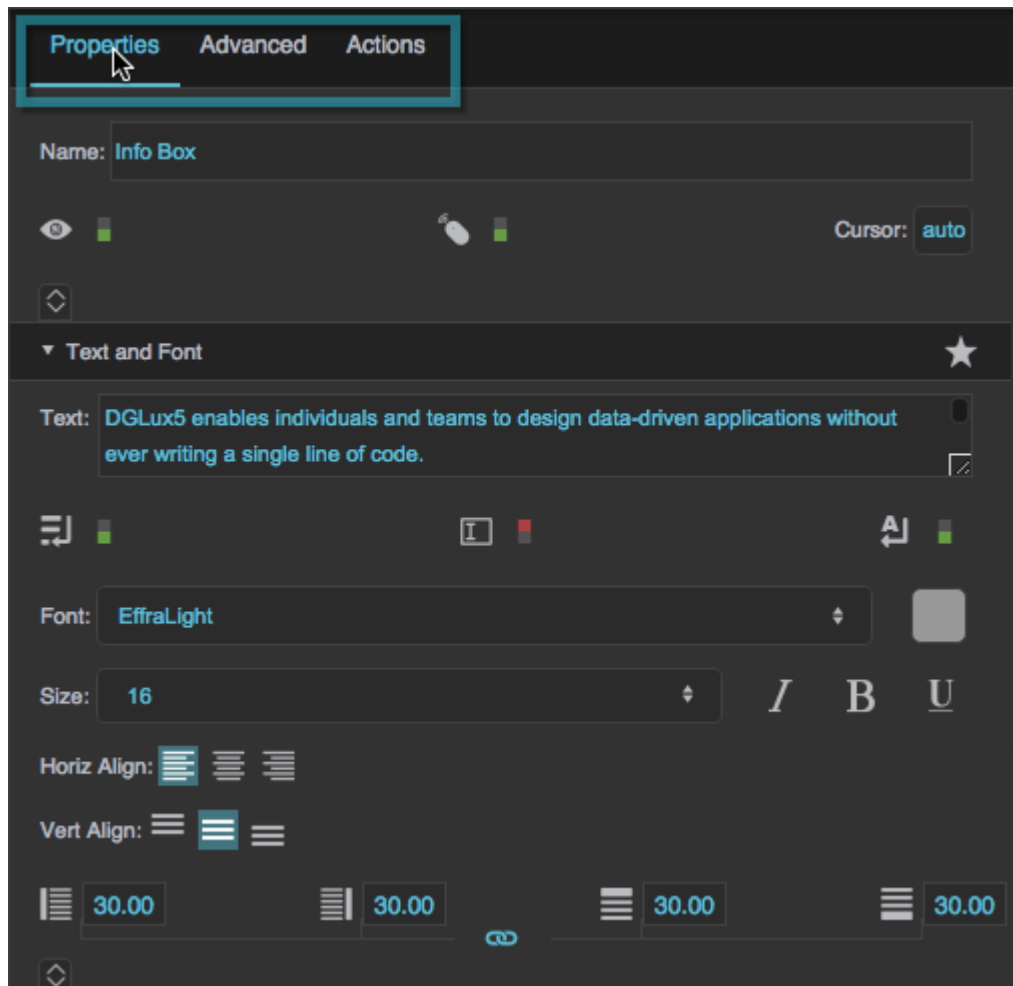


After dropping

Undock Panels

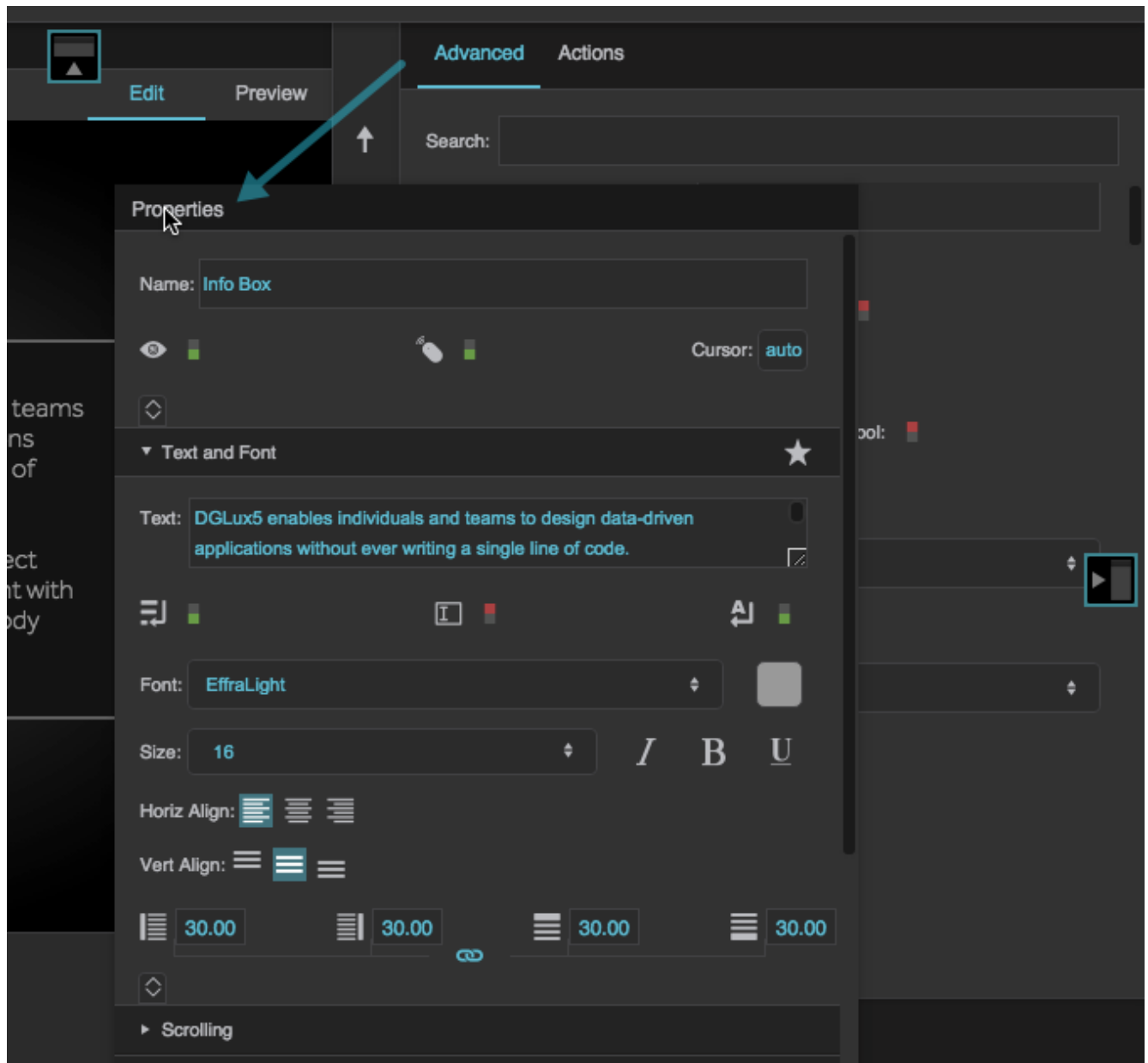
To undock a panel:

1. Click and hold the panel's tab.



2. Drag the panel out of its dock.

Drop zone arrows (👈, 👉, 👆, 👇), appear indicating places the panel can be dropped.



3. Drop the panel anywhere except a drop zone arrow.

[Previous: Manage Panels](#)

[Next: Work Behind Panels](#)

From:

<https://wiki.dglogik.com/> - **DGLogik**

Permanent link:

https://wiki.dglogik.com/dglux5_wiki:workspace_and_workflow:manage_panels:dock_and_undock:home

Last update: **2021/09/20 15:03**

