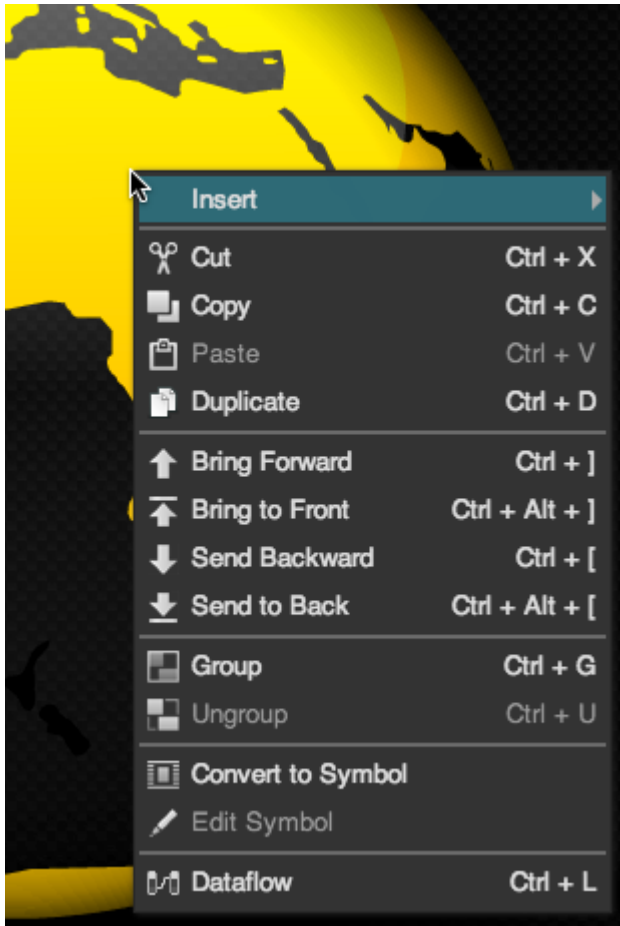


Context Menu

Options in the context menu vary depending on the active tool, selection, or panel. They are similar to the main menu options in the menu bar.

- To show the context menu, right-click on an element.



Viewing the context menu for an image component

[Previous: Main Menu](#)

[Next: Property Options](#)

From:
<https://wiki.dglogik.com/> - **DGLogik**

Permanent link:
https://wiki.dglogik.com/dglux5_wiki:workspace_and_workflow:panels_and_menus:context_menu

Last update: **2021/09/20 14:51**

