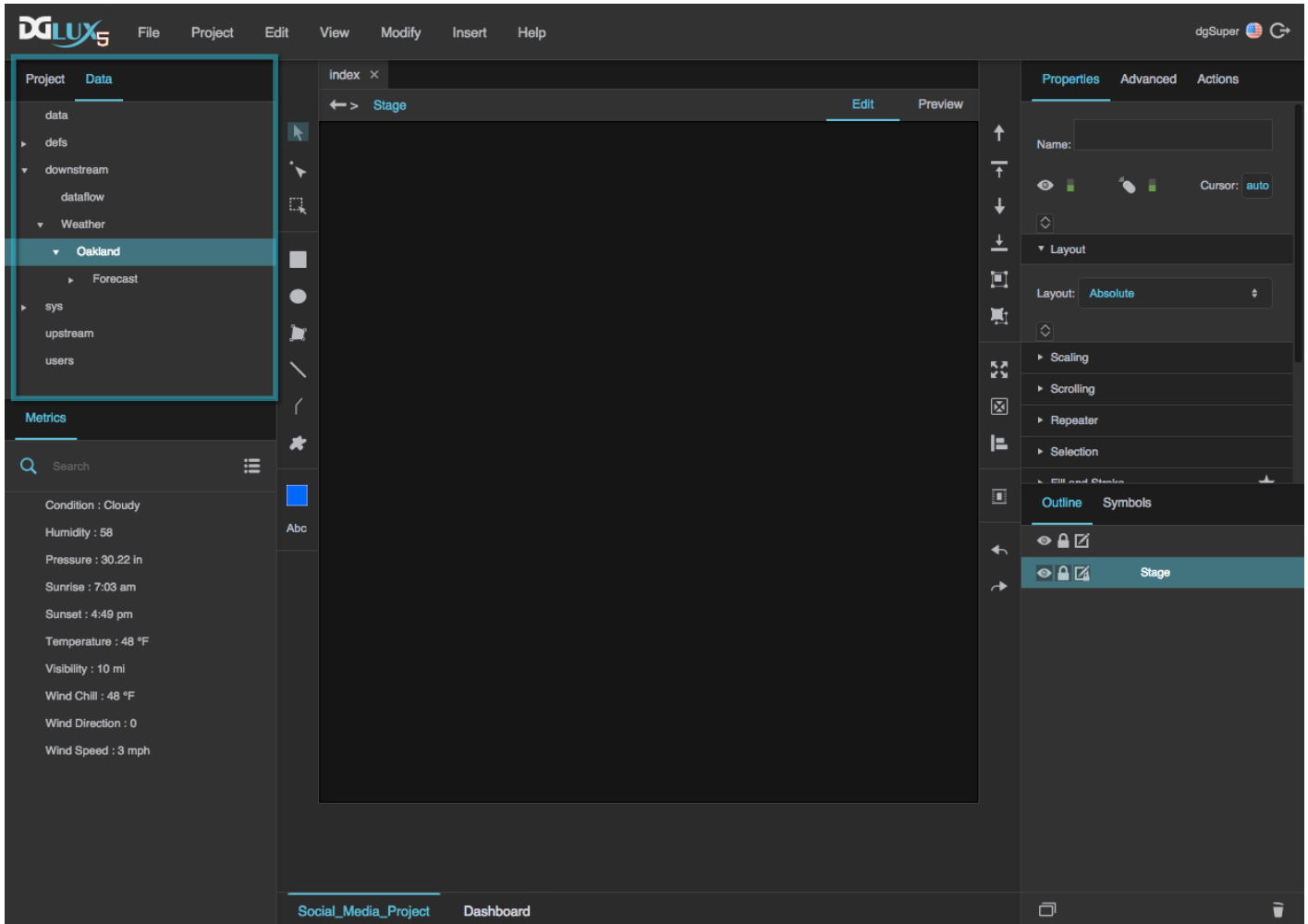


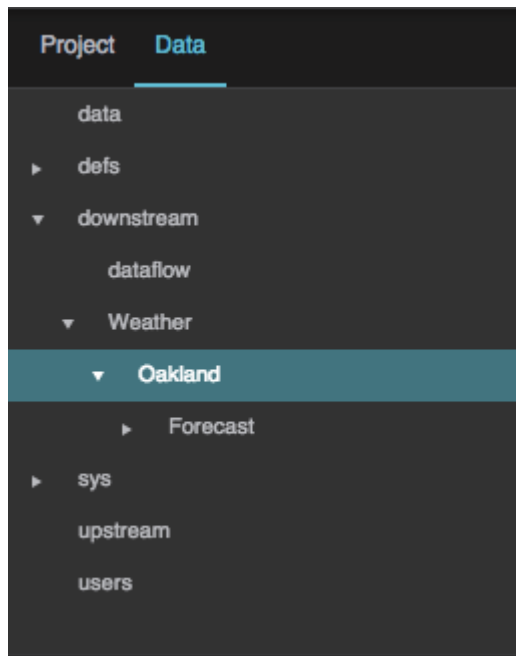
Data Panel

The Data panel contains the data structure configured and available to your project. By default, it is located at the top left corner of the DGLux5 workspace, in a tab behind the [Project panel](#).



The location of the Data panel


The data structure shown in the Data panel is a tree structure consisting of nodes. The data structure depends on your configured data sources. Therefore, the nodes in the data panel might be very different from those in the image below.

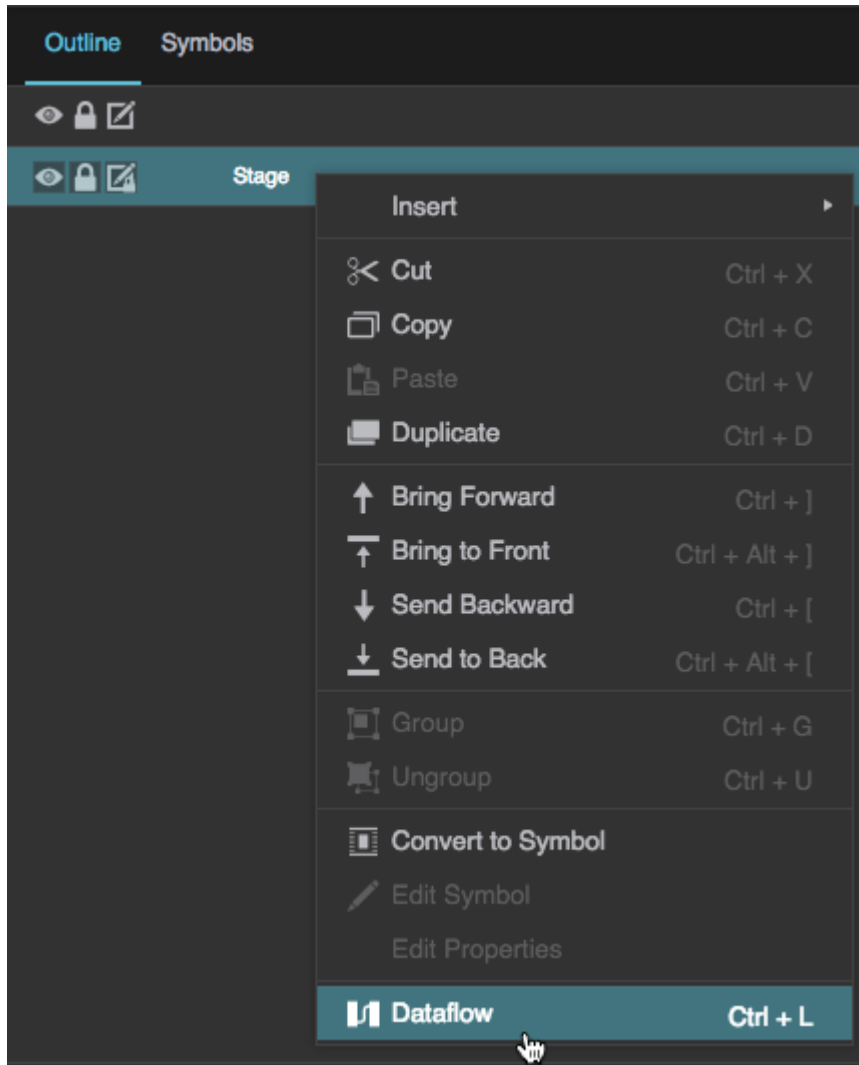


The Data panel

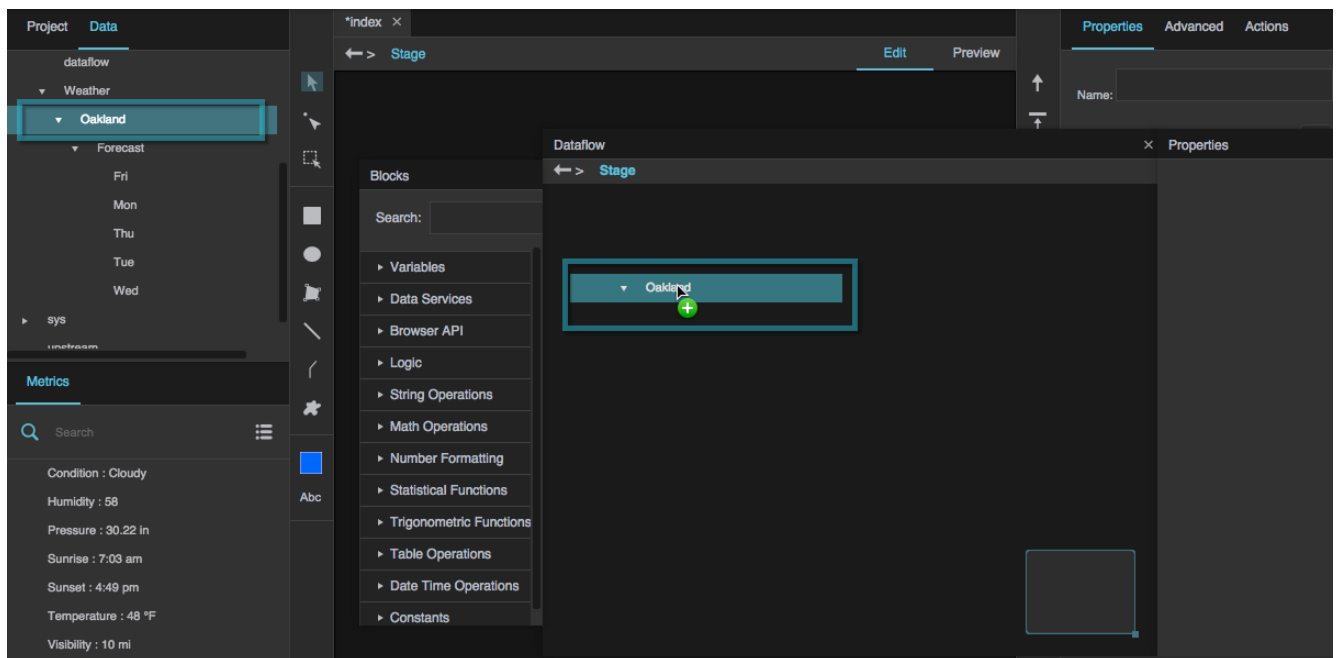
Get Information about a Node's Children

To get more information about the children of a node, you can use the [Get Children](#) dataflow block. This block tells you whether the children of the node are metrics with values or histories, as well as other information about the children. To read more about the information stored in the Get Children block, see [Get Children](#).

1. Open the [Dataflow window](#) for some item in the project. For example, you could right-click the Stage in the [Outline](#), and select  **Dataflow**.

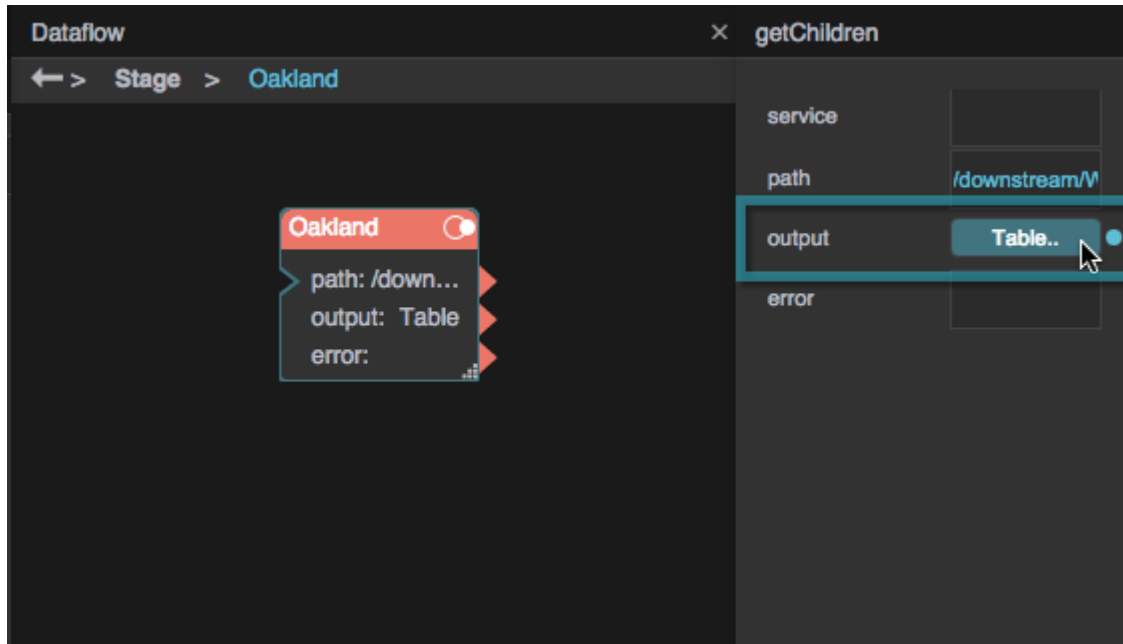


2. Drag a node from the Data panel into the Dataflow window.



A Get Children dataflow block is added.

3. Click **Table** to open the output table of the Get Children block.




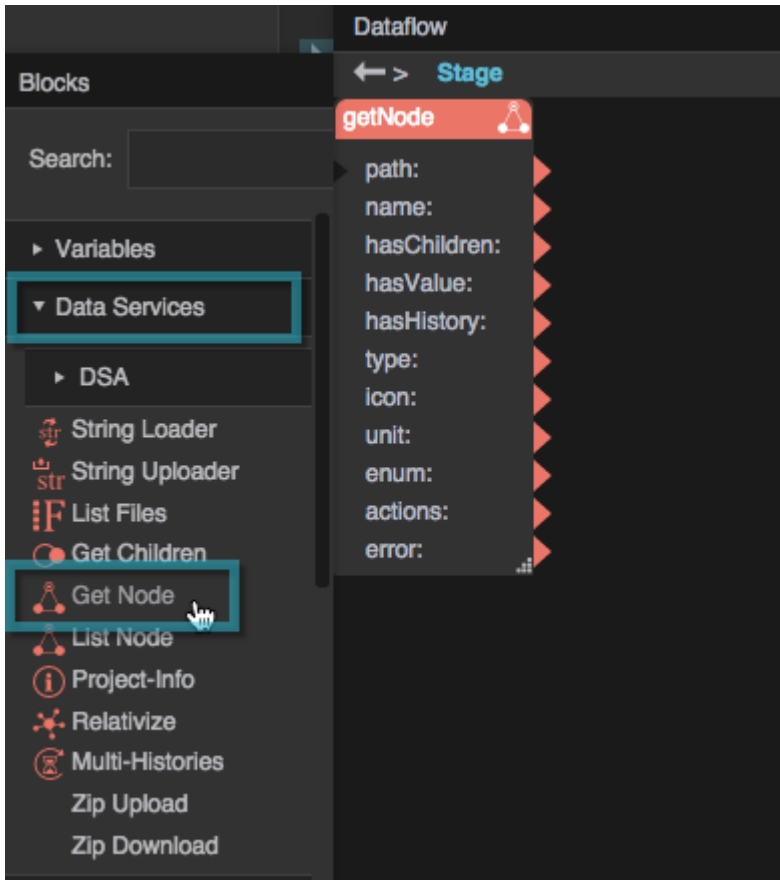
The table opens in a pop-up.

name	path	hasChildren	hasValue	hasHistory	type	icon	unit
Condition	/downstream/Weather/Oakland-CA-United States/Condition	true	true	false	string		
Temperature	/downstream/Weather/Oakland-CA-United States/Temperature	true	true	false	number		
Wind Chill	/downstream/Weather/Oakland-CA-United States/Wind_Chill	true	true	false	number		
Wind Speed	/downstream/Weather/Oakland-CA-United States/Wind_Speed	true	true	false	number		
Humidity	/downstream/Weather/Oakland-CA-United States/Humidity	true	true	false	number		
Pressure	/downstream/Weather/Oakland-CA-United States/Pressure	true	true	false	number		
Visibility	/downstream/Weather/Oakland-CA-United States/Visibility	true	true	false	number		
Wind Direction	/downstream/Weather/Oakland-CA-United States/Wind_Direction	true	true	false	number		
Sunrise	/downstream/Weather/Oakland-CA-United States/Sunrise	true	true	false	string		
Sunset	/downstream/Weather/Oakland-CA-United States/Sunset	true	true	false	string		
Forecast	/downstream/Weather/Oakland-CA-United States/Forecast	true	false	false			

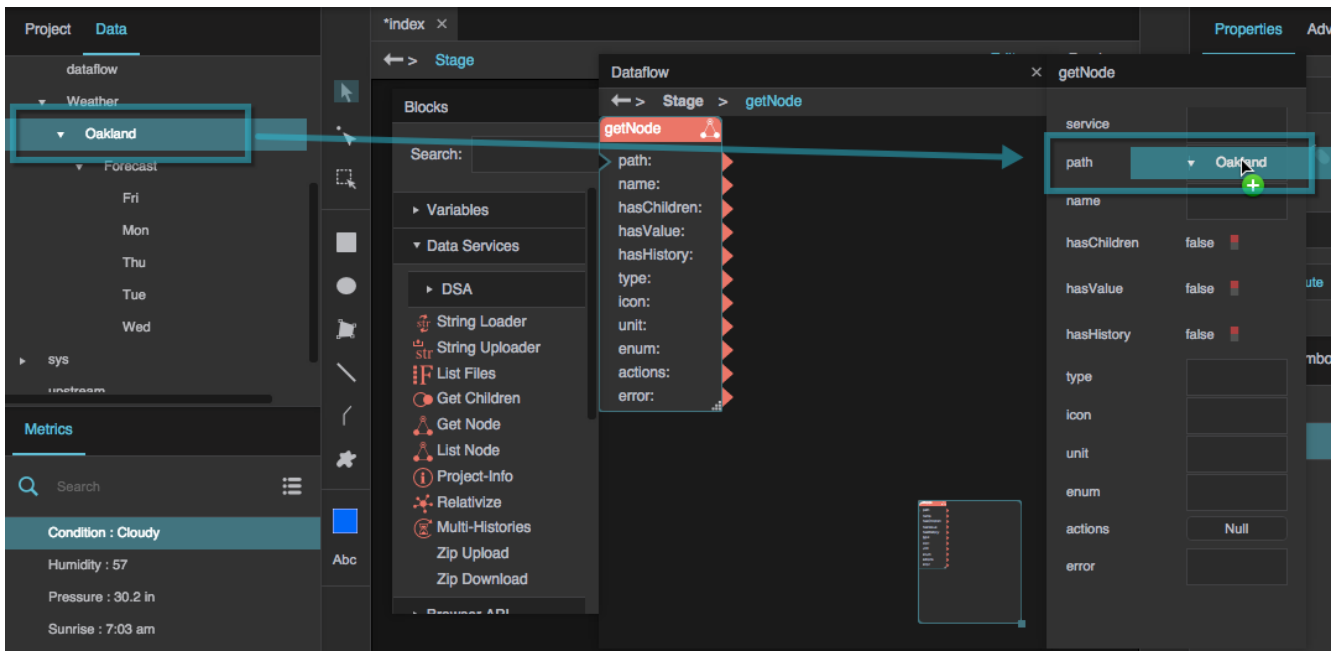
Get Other Information about a Node

You can get other information about a data node using the [Get Node](#) dataflow block.

1. Open the [Dataflow window](#) for some item in the project. For example, you could right-click the Stage in the [Outline](#), and select  **Dataflow**.
2. In the Dataflow window, expand **Data Services**, and click **Get Node** to add a Get Node block to the dataflow.



- 3. Click the red title bar of the Get Node block to select the block.
- 4. Drag the node from the Data panel to the **path** property of the block, and then press Enter or Return.



The information about the data node is displayed in the Dataflow window's properties panel.

The screenshot displays the 'Dataflow' workspace with a 'getNode' block selected. The 'Blocks' panel on the left lists various data services, including 'String Loader', 'String Uploader', 'List Files', 'Get Children', 'Get Node', 'List Node', 'Project-Info', 'Relativize', 'Multi-Histories', 'Zip Upload', and 'Zip Download'. The 'getNode' block is highlighted in the 'Stage' view, showing its configuration parameters:

- path: /down...
- name: Oakl...
- hasChildren: f...
- hasValue: f...
- hasHistory: ...
- type:
- icon:
- unit:
- enum:
- actions: Table
- error:

The 'getNode' configuration panel on the right shows the following settings:

- service: [empty]
- path: /downstream/Weath
- name: Oakland
- hasChildren: false
- hasValue: false
- hasHistory: false
- type: [empty]
- icon: [empty]
- unit: [empty]
- enum: [empty]
- actions: Table..
- error: [empty]

[Previous: Project Panel](#)

[Next: Metrics Panel](#)

From:
<https://wiki.dglogik.com/> - **DGLogik**

Permanent link:
https://wiki.dglogik.com/dglux5_wiki:workspace_and_workflow:panels_and_menus:data_panel

Last update: **2021/09/20 14:51**

