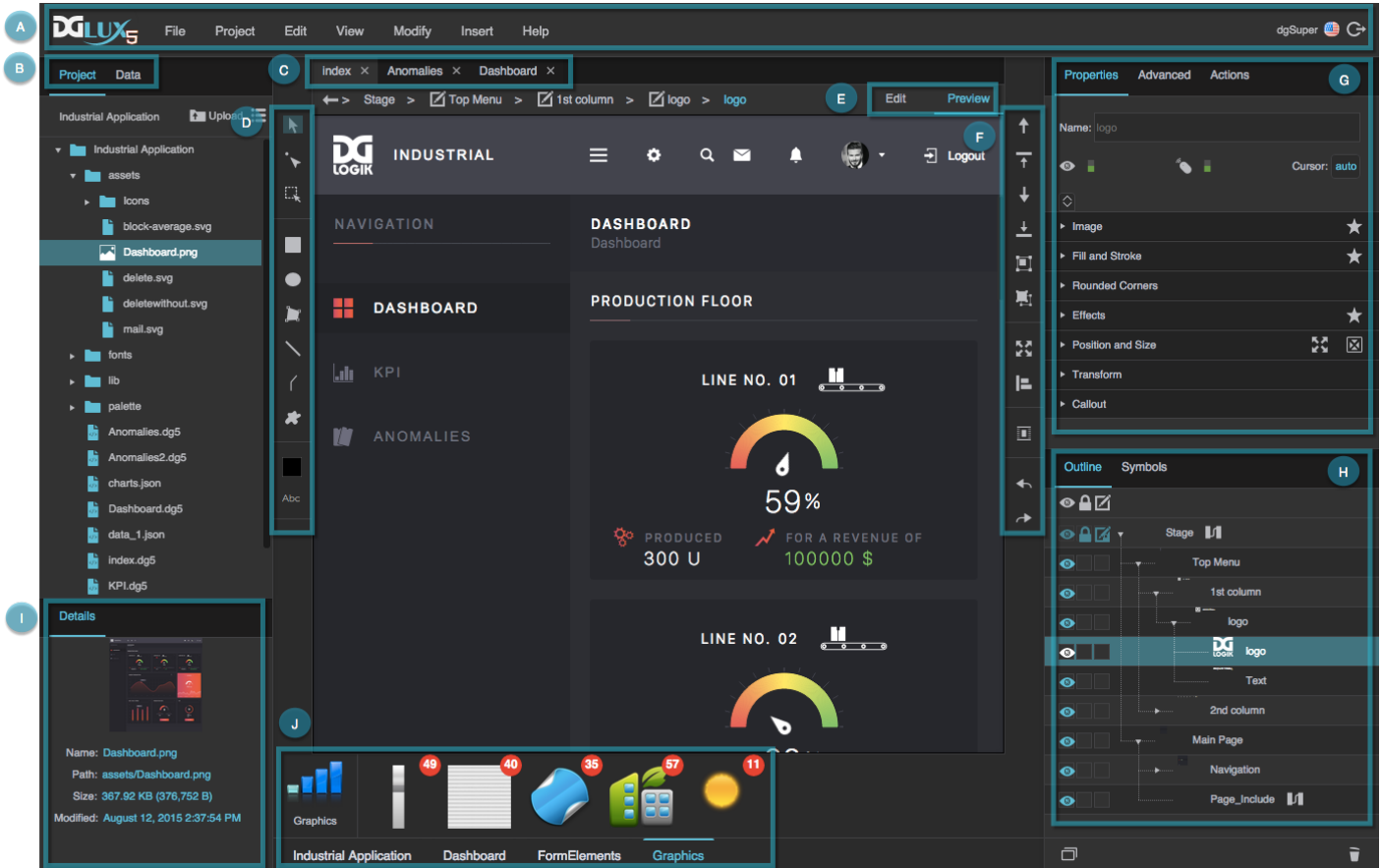


Default Workspace

This page describes the default DGLux5 panel configuration.



A typical DGLux5 workspace with panels in the default configuration

- **A.** The **Application bar** contains the **Main Menu** and other application controls.
- **B.** The **Project panel** contains the project files. In another tab, the **Data panel** contains the data structure.
- **C.** **Document windows** display the open .dg5 files for WYSIWYG editing.
- **D.** The **Tools panel** contains tools to draw, transform, select, and more.
- **E.** **Edit mode** lets you select components in the Document window for editing. **Preview mode** enables you to do user interactions with the page.
- **F.** The **Quick Access panel** contains shortcuts to operations for arranging, grouping, aligning, converting to symbol, and undo and redo.
- **G.** The **Property Inspector** lets you edit the typical properties of the currently selected component, widget, shape, or other element. In other tabs, the **Advanced Properties Panel** lets you edit less typical properties, and the **Actions Panel** lets you create responses to user interaction.
- **H.** The **Outline** lets you edit elements in the current .dg5 file or symbol in a hierarchical structure. It contains shortcuts for selection, visibility, locking, and filtering for all elements. In another tab, the **Symbols Panel** contains this page's symbols.
- **I.** The **Details panel** shows details about the currently selected project file, if the Project panel is selected. The **Metrics panel** shows data metrics at the currently selected data location, if the Data

panel is selected.

- **J.** The [widget palette](#) contains the available widgets.

In addition, you can open these pop-ups:

- [Properties pop-up](#) - Access a property even when it is not currently visible in the Property Inspector.
- [Binding dialog](#) - Access more options for property bindings.
- [Dataflow window](#) - Use dataflow.
- [Project Dataflow](#) - Use the dataflow that the entire project can access.
- [Favorites pop-up](#) - Save and access favorite styles.
- [Fill and border pop-ups](#) - Set a solid color, gradient, or image for an object background or border.

The menus in the DGLux5 workspace are:

- [Main Menu](#) - The menu bar. Find it at the top of the browser window.
- [Property Options Menu](#) - Find it by mousing over a property and then clicking the blue dot.
- [Context Menu](#) - Find it by right-clicking. Menu options vary depending on where you right-click.

Video Tutorial: Workspace Basics

More video tutorials are [here](#).

[Previous: Themes](#)

[Next: Manage Panels](#)

From:

<http://wiki.dglogik.com/> - **DGLogik**

Permanent link:

http://wiki.dglogik.com/dglux5_wiki:workspace_and_workflow:workspace_basics:home

Last update: **2019/07/17 19:17**

